



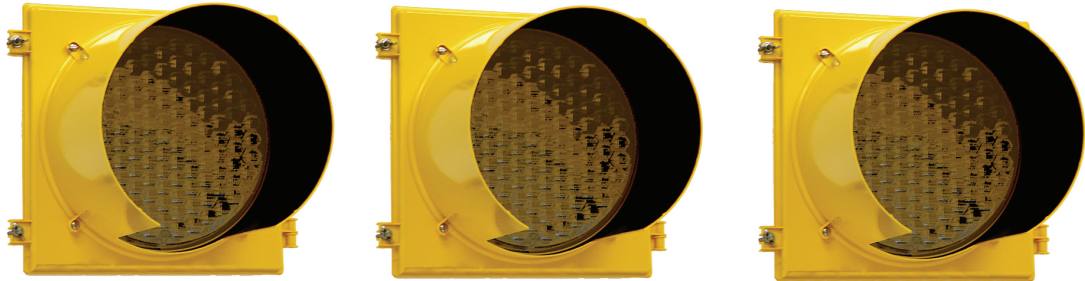
SPECIFICATIONS



General Traffic Equipment

- *Input Voltage: 11.5VDC to 25VDC*
- *Dual Alternating Lamp Flasher 50/60 Flashes Per Minute, with LED Indicators*
- *Solar Panel Regulator Rated 25A at 12 VDC, Temperature Compensation*
- *Size: 5.31" (13.5 cm)L x 1.75" (4.5 cm)W x 3.63" (9.2 cm)H*
- *Warranty as follows: Two Years on Electronics; 1 Year on Battery, Prorated; 5 Years on LED*

CAUTION BEACON COMPONENTS	
PART NUMBER	DESCRIPTION
F16-SPCB-1	Aluminum Enclosure, Police Lock, Single Gel Cell Battery
F16-SPCB-2	Aluminum Enclosure, Police Lock, Two Gel Cell Batteries
SOL-PL-55	55-Watt Solar Panel, Tilted Mounting Bracket for Pole
SOL-PL-70	70-Watt Solar Panel, Tilted Mounting Bracket for Pole
SOL-PL-110	110-Watt Solar Panel, Tilted Mounting Bracket for Pole
T11-POLY-N-12VDC-SOP	12" Yellow LED Beacon Head, Bracket for Pole Mounting
E11-POLY-N-12VDC-SOP	8" Yellow LED Beacon Head, Bracket for Pole Mounting
PT-109	365-Day Programmable Timer
SSF-SPCB-2	Flasher Enclosure, Alternating Flasher, Solar Regulator, Low Volt Disconnect
PA-16	Aluminum 4" Diameter Pole and Base, 16"



CAUTION BEACON ASSEMBLIES	
MODEL NUMBER	DESCRIPTION
SPCB-SZ-55-3	School Zone Beacon Assembly: Two 12" LED Heads, One 8" LED Rear Head, Aluminum Enclosure, Police Lock, Gel Cell Battery, 40/55-Watt Tilted Solar Panel, 365-Day Timer, Alternating Flasher with Solar Regulation and Built-In Low Voltage Disconnect
SPCB-PM-55-1	Permanent Mounted Single Head: One 12" LED Head, Aluminum Enclosure, Police Lock, Gel Cell Battery, 50/55 Watt Tilted Solar Panel, Alternating Flasher with Solar Regulation and Built-In Low Voltage Disconnect, Runs 24 Hours
SPCB-PM-120-2	Permanent Mounted Dual Head: Two 12" LED Heads, Aluminum Enclosure, Police Lock, Gel Cell Battery, 100/120 Watt Tilted Solar Panel, Alternating Flasher with Solar Regulation and Built-In Low Voltage Disconnect, Runs 24 Hours
XXXX-XX-XXX-WP	Includes 16-foot Aluminum Pole & Square Base

www.generaltrafficequip.com