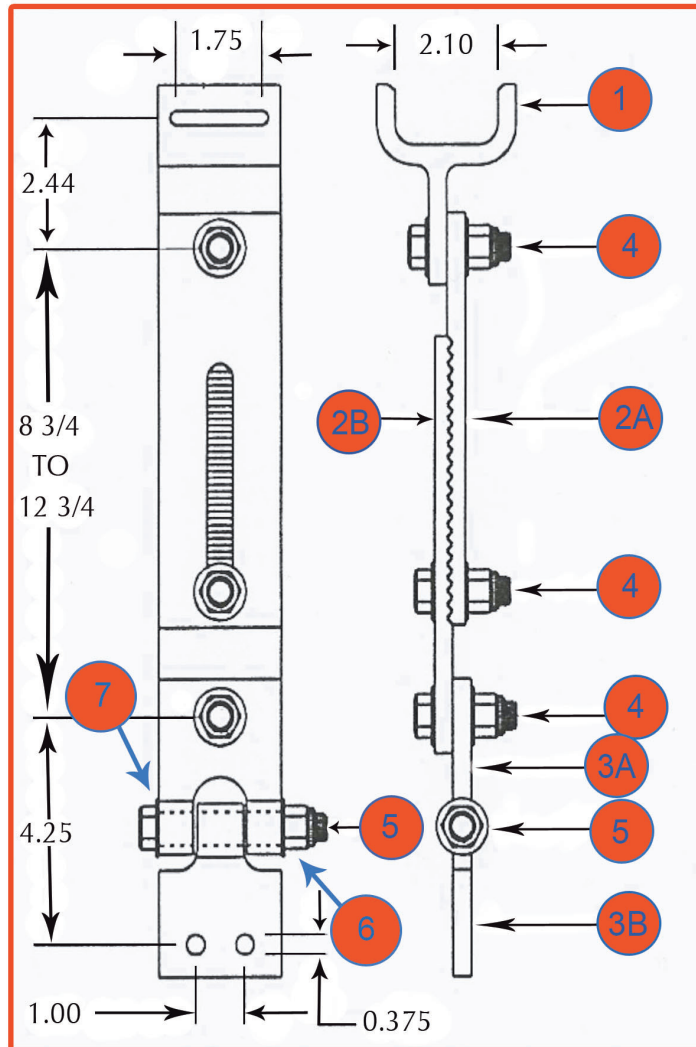




# SPECIFICATIONS



1. TOP BRACKET, 6061-T6 ALUMINUM ALLOY
- 2A. ADJUSTABLE BAR, FIXED, 6061-T6 ALUMINUM ALLOY
- 2B. ADJUSTABLE BAR, SLOTTED, 6061-T6 ALUMINUM ALLOY
- 3A. FEMALE HINGE, 6061-T6 ALUMINUM ALLOY
- 3B. FEMALE HINGE, 6061-T6 ALUMINUM ALLOY
4. CONNECTING HARDWARE:  
 1/2-13 X 1 3/4" LENGTH HEX HEAD BOLT, 300 SERIES ST. STEEL  
 1/2-13 NYLON INSERT LOCK NUT, 300 SERIES ST. STEEL  
 1/2" FLAT WASHER, 300 SERIES ST. STEEL
5. HINGE PIVOT ASSEMBLY:  
 1/2-13 X 4.25" LENGTH HEX HEAD BOLT, 300 SERIES ST. STEEL  
 1/2-13 NYLON INSERT LOCK NUT, 300 SERIES ST. STEEL  
 1/2" FLAT WASHER, 300 SERIES ST. STEEL  
 OILITE BUSHING, 5/8" O.D. X 1/2" I.D. X 1/16" SHOULDER X 1/2" LENGTH
6. RIGHT-HAND TORSION SPRING, 300 SERIES ST. STEEL
7. LEFT-HAND TORSION SPRING, 300 SERIES ST. STEEL

[www.generaltrafficequip.com](http://www.generaltrafficequip.com)

General Traffic Equipment