

# RIGID MAST ARM MOUNT

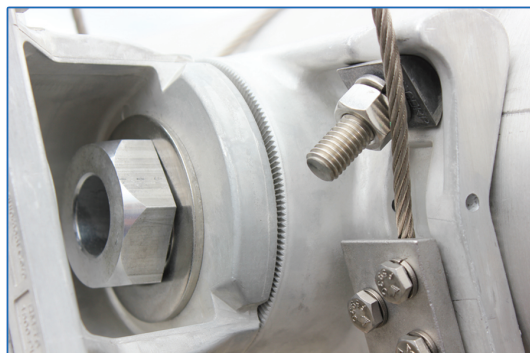
## CABLE TYPE



- *Clamp Halves Have Serrated Faces to Index in 2° Increments. Positive Locking - No Spin Here!*
- *The Ultimate in Versatile Flexibility.*
- *Time Saving Ease of Installation.*
- *Adjusts in Height, Rotationally and Angularly.*
- *Available in One-Way, Two-Way & "Cluster" Arrangements.*
- *All High-Strength Materials Used.*
- *All Hardware is Stainless Steel.*
- *Ribbed Support Tube Available in Different Lengths.*
- *Interchangeability of Components with Other Major Brands.*



Rigid Mast Arm Clamp - Cable Type



Close-up of Serrated Teeth

### GENERAL DESCRIPTION:

The "RM" series is a truly versatile signal mounting system designed for rigid mast arm applications. Available in several configurations for multiple section signal installations, the assembly allows complete adjustability for vertical as well as horizontal type mounting. Installation of the "RM" series is quick and easy, thanks to the cable-type "choker" and single stainless chase nipple attachment. Matching serrated faces on clamp halves allow precision adjustment of 2° and positive locking. Unlike other manufacturers designs, which rely on "deforming" one casting to "grip" the mating casting (and ultimately stress cracking one of the castings) the "RM" series keeps both halves "solid" and "locked up tight." Top and bottom mounting "arms" attach signal to support tube, which conceals the cable wiring from the mast arm.



**General  
Traffic  
Equipment  
Corporation**

259 Broadway, Newburgh, NY 12550

**(845) 569-9000**

**TOLL FREE:**

**(800) 222-2828**

**FAX:**

**(845) 569-1800**

**EMAIL:**

**info@generaltrafficequip.com**

**www.generaltrafficequip.com**

General Traffic Equipment