

Serrated Elbow

EF-240 Series



47,000 Tensile Strength Die-Cast Aluminum

- Gentle 90° Sweep Curve - Wire Pull is a Snap!
- Economical , Low-Cost - Save \$
- Sharp, Die-Cast Serrated Teeth
- Precision Die-Cast Aluminum Construction
- Cast Ribs Add Strength
- Choice of 1 1/2" Threaded or Tri-Stud Combo Type



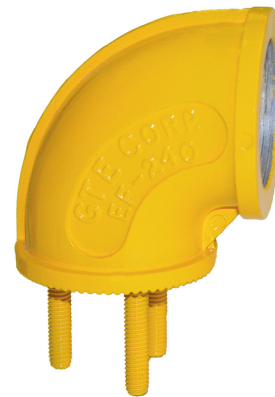
EF-240



EF-240



EF-240TS
Studs are
Stainless Steel



General Traffic's die-cast signal elbows eliminate poor quality casting and unsharp serrations. Gentle 90° sweep of elbow allows wiring and cables to be run through without snagging or dead stops. Threads are computer (CNC) machined and gauged for tolerance - assuring an exceptional fit.

Please specify powder-coated finish when ordering.



**General
Traffic
Equipment
Corporation**

259 Broadway, Newburgh, NY 12550

(845) 569-9000

TOLL FREE:

(800) 222-2828

FAX:

(845) 569-1800

EMAIL:

info@generaltrafficequip.com

www.generaltrafficequip.com

General Traffic Equipment