

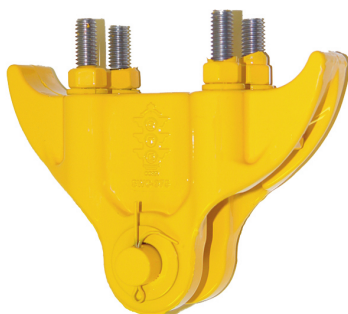
SPAN WIRE CLAMP

SWC-375A - Aluminum

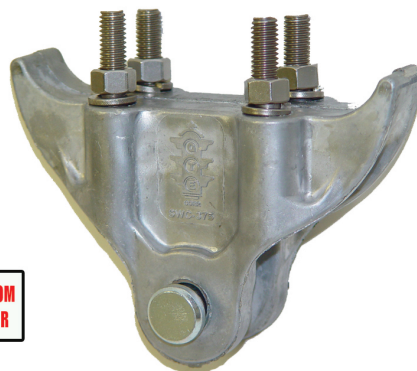


Die-Cast Aluminum Construction

- 47000 PSI Tensile Strength!
- Stainless Steel Bushings Prevent Wear in the Pivot Holes
- "U" bolts and 5/8" Clevis Pin Available in Stainless or Plated Steel
- Powder-Coat or Natural Finish



Please specify powder coated finish when ordering



General Traffic Equipment's SWC-375A is a high-strength alternative for malleable iron clamps, with the corrosion resistance of aluminum. High-strength die-cast aluminum is used in the casting (47,000 PSI tensile strength), and #316 stainless steel bushings are used in the pivot holes. The result is a durable, low-cost span wire clamp that will endure many years of abusive high winds in coastal communities. The SWC-375A will adapt easily to any wire entrance head or balance adjuster. The clamp accommodates up to 5/8" messenger wire.

MODEL	DESCRIPTION
SWC-375A-SS	Span Wire Clamp, Stainless Steel "U" Bolts, Clevis Pin, Washers & Nuts
SWC-375A	Span Wire Clamp, Plated Steel "U" Bolts, Clevis Pin; Other Hardware is Stainless



**General
Traffic
Equipment
Corporation**

259 Broadway, Newburgh, NY 12550

(845) 569-9000

TOLL FREE:

(800) 222-2828

FAX:

(845) 569-1800

EMAIL:

info@generaltrafficequip.com

www.generaltrafficequip.com

General Traffic Equipment